



Precise Data Leads to Cost Control

Use standard, average, weighted average, FIFO or LIFO costing methods to form your tactical plans for success. Enter your various costs and prices as you create the items in the system and stay ahead of today's business diversity.

Powerful processing features include straight-ahead physical counting, immediate historical information, manufacturers lot tracking and as many transactions as you wish, each of which is individually and automatically processed and recorded, thus maintaining the accuracy of stock counts, and allowing your costing to grow and change with your needs.

Robust Pricing Converts Stock to Cash

Track which items sell and which ones do not, and move the old stock by implementing discounts for customers, volume prices, individual items and all your locations separately.

Serial/Lot/Expiry Date Tracking

Quality is improved by the tracking of items by serial numbers, second level of user serial numbers, expiry dates or manufacturer's lots, as well as providing an audit trail all the way back to the original purchase order.

Streamlined Process of Inventory

Process purchases, adjust costs, create debit and credit memos, inventory transfers, stock adjustments (including those for damaged goods), and add extra costs to purchases in a feature rich environment.

Unlimited Vendors For All Items

For any item you can assign as many vendors along with their vendor part numbers and unique cost related to that vendor so you will always know who you can purchase your items from along with what the costs should be.

Versatile Costing and Pricing Methods

Sales promotions and customer contract pricing may also be established. Standard and average costs are maintained for each item regardless of costing method. Prices can be calculated as a discount of the standard price or as a markup of the standard cost, and can be calculated based on FIFO, LIFO, average cost, standard cost, LIFO and FIFO methods.

You can assign up to twelve Price Levels by percentage or dollar value to each item, then indicate what customer gets assigned what Price Level.

Warranty Management

Warranty history is established for items on receipt and automatically recalled when items are returned using the integrated Return Merchandise Authorization (RMA) module.



SOPHISTICATED INVENTORY MANAGEMENT

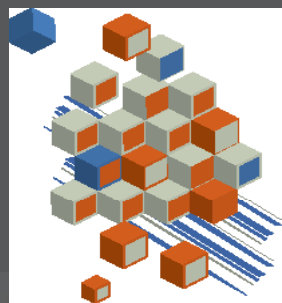
In today's fiercely competitive business world, management should aim beyond survival at market leadership. You need all the help you can get. While you may know the fundamental operations of your business better than we can ever hope to know, no one is better equipped to establish a cost effective inventory control solution tailored to your unique business operations better than we are.

Precise inventory control is an essential part of the operation of a successful, well-organized company and successful businesses require timely and accurate information on your receipt of goods, the movement of goods within or between locations, the sale, removal or other disposition of goods, and the precise valuation and status of goods remaining in inventory at any point in time down to the bin status, colour, size, style, lot numbers, serial numbers and expiration dates remaining in stock. If you run out of stock, you will lose sales. If you have too much stock, the lack of cash flow will hurt you.

HOW SIMMS CAN BENEFIT YOUR BUSINESS

- Achieve inventory accuracy
- Maximize use of warehouse space
- Optimize labour efficiency and accuracy
- Improve customer order fulfillment rates
- Satisfy customer demand
- Eliminate costly, labour-intensive inventory discrepancies
- Control your prices and costs
- Free yourself from your desk

The Inventory Software you can rely on



T: 1-866-888-KCSI / 1-604-504-7936
Unit# 201 31234 Wheel Ave, Abbotsford, BC V2T 6G9 Canada
<http://www.kornyk.com> | sales@kcsi.ca

TRACK INVENTORY WITH SIMMS INVENTORY CONTROL SOFTWARE

See what you sold, what you need to order and what should be left in stock. SIMMS can be interfaced with various portable data collectors and your computer. It captures the data from these devices, automatically updates the database, sends the information directly to SIMMS all with a touch of a button.

SIMMS Software's Inventory Control Maximizes your Inventory Management benefits.

SIMMS provides a complete inventory management solution for you, controlling inventory, tracking items, ensuring adequate supplies, increasing warehouse productivity, and significantly reducing paper flow. SIMMS Software's ability to input and track manufacturer's serial numbers, generate and print internal barcodes, and track true costs and warranties sets it apart from any other inventory system.

Inventory Control Software that is easy to configure and customise

SIMMS is easy for any user to configure and customize utilizing several user-defined fields available within the program, eliminating the need to change lines of code at installation. This translates into a reduction of implementation time, and eliminates the possibility of bugs being added inadvertently. Now there is finally the option of giving any business all the help it will ever need in terms of complete inventory control. Your business can have that affordable yet powerful inventory management program that you have always wanted.

INVENTORY MANAGEMENT MODULE FEATURES

Accurate Lot and Inventory Tracking

Reduce costs and save money by avoiding overstocking and unused space by using the accurate lot and inventory tracking of SIMMS. Powerful inventory control lets you maximize your profits. Track all items purchased by their manufacturers lot numbers at every step of

your production process, as well as expiration dates that help you prevent delays due to understocking. You can track inventory by status, costs, reorder points, committed stock, stock on order, on-hand or on assignment.

Barcode Printing

Both Code 39 and Code 128 bar code formats are supported by various printers, as inventory labels with bar codes are printable for inventory items (additional codes available).

Comprehensive Reorder Points

The Reorder Report lists items of stock on hand that have reached their pre-designated reorder points, which can be unique to each location for each item. The suggested reorder point can be entered based upon either maximum stock quantity or economic order quantity.

Custom Reports

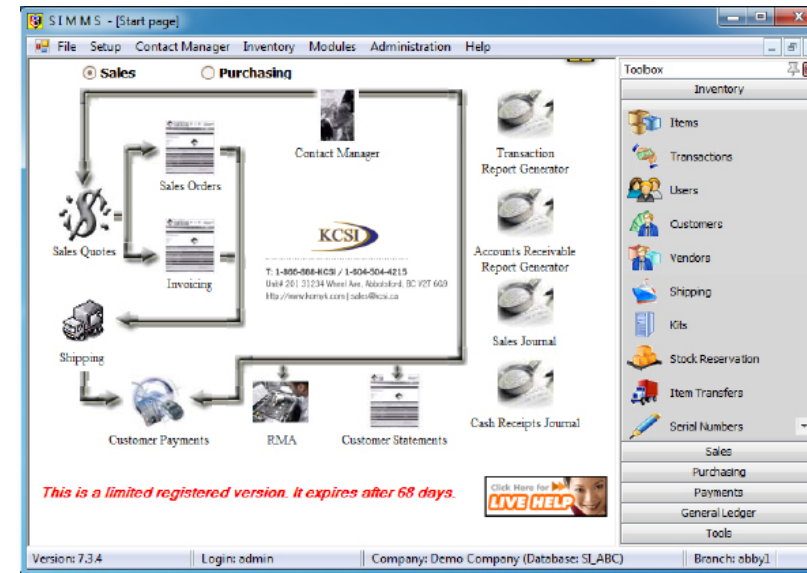
Easily customize reports from SIMMS with Crystal Reports®, the standard of excellence on today's market, allowing the export of data and its easy distribution. The sales history of items, either by month, status or turnover can be pulled from the system with ease. Streamlined reporting tools in SIMMS keeps the data you need where you need it most, giving you the information to truly manage your inventory and keep the right amount of stock in the right place.

History of Transactions

Transaction audit trail can be filtered by date, and a history of all inventory transactions is permanently maintained.

Item Aliases

Assign alias item numbers to each customer and vendor. These permit the user to search items by aliases for sales orders and purchase orders.



Item History

The list shows the invoice number with the invoice date that contains the items purchased. While examining the sales history of items, all invoices containing the items sold to specific customers can be reviewed.

Multiple Warehouses/Locations

Independent inventories of item can be managed in unlimited locations. In addition, items can be transferred between warehouse locations. Locations can be assigned to customers for consignment purposes giving you total control of whose inventory is where.

Physical Count Capabilities

Simplify the physical count process and speed up data entry using Physical Count functionality found in SIMMS and on our remote windows mobile data collector program that can be installed on a windows mobile data collector.

The Variance Report shows both the current physical count and the count shown in the system, allowing analysis of the difference.

Power and Integration

Coordinate your time by affiliating items to specific and preferred vendors, allowing your sales team immediate response time for any customer's questions about your current stock items and their prices. SIMMS provides users with a complete view of items set aside for production and/or sales, on-hand counts and the status of inventory items, functioning as both integrated and fully functional.

SIMMS MODULES

Below is a list of some of the many modules found in SIMMS Software

- Accounting Software Link
- Accounts Payable
- Accounts Receivable
- Apparel Module
- Automotive Maintenance (WO) Module
- Bar Code Module
- Data Collector Module
- Fulfillment Module
- General Ledger
- Inventory Management
- Item Transfers
- Kitting-WO Module
- Multi-Currency
- POS
- Purchase Orders
- Receipt of Goods
- Replenishment Module
- Request for Quotes
- Sales Quotes
- Sales Order
- Sales Invoicing
- Service and Returns (RMA) Module
- Servicing Module
- Shipping Manager
- SKU Manager
- Visual Import Manager

