



201-31234 Wheel Avenue, Abbotsford, BC V2T 6G9  
 Tel: 604-504-7936 Fax: 604-504-7976  
 Website: [www.kcsi.ca](http://www.kcsi.ca) Email: [sales@kcsi.ca](mailto:sales@kcsi.ca)



# SIMMS

Inventory Management System

## Apparel Matrix Manual

Table of Contents

- [Setup](#)
- [Style Setup](#)
- [New Style](#)
- [Change an Existing Style](#)
- [Delete an Existing Style](#)
- [Size Setup](#)
- [New Size](#)
- [Change an Existing Size](#)
- [Delete an Existing Size](#)
- [Color Setup](#)
- [New Color](#)
- [Change an Existing Color](#)
- [Delete an Existing Color](#)
- [Matrix Parameters](#)
- [Apparel Stock Report](#)
- [Style Matrix](#)
- [Assign Styles to Items](#)
- [Remove Styles from an Item](#)
- [Apparel Cost Price](#)
- [Receiving Matrixed Items](#)
- [Issuing Matrixed Items](#)
- [Using SKU Numbers](#)
- [Important SIMMS Software Contact Information](#)

If a system contains the SIMMS Apparel Matrix module, the user is able to assign styles, colors and sizes to inventory items. To open the Apparel Matrix menu, from the main page click Modules, then Apparel Matrix. Once styles have been established, specific apparel details can be assigned to an item through the Inventory Manager (select the Inventory dropdown menu from the main screen, then Inventory Manager, then Tools, then Apparel Matrix).

### Setup

#### Style Setup

Open the Style Setup screen by selecting Modules from the main menu, then Apparel Matrix, then Setup, then Style Setup.

#### New Style

In the Code field (1), enter a short code name to represent the style being set up. Briefly describe the style in the Description field (2). Click Save New when completed.

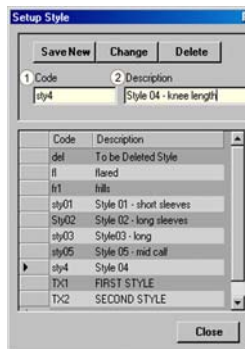
#### Change an Existing Style

To change a style description, select the style from the list, make the changes in the Description field (2), and then click Change.

#### Delete an Existing Style

To delete an existing style, select the style from the list, then click Delete.

**Warning: A deletion cannot be undone!**



#### Size Setup

Open the Size Setup screen by selecting Modules from the main menu, then Apparel Matrix, then Setup, then Size Setup.

### New Size

In the Code field (1), enter a code to represent the size. Briefly describe the size in the Description field (2). Click Save New when completed.

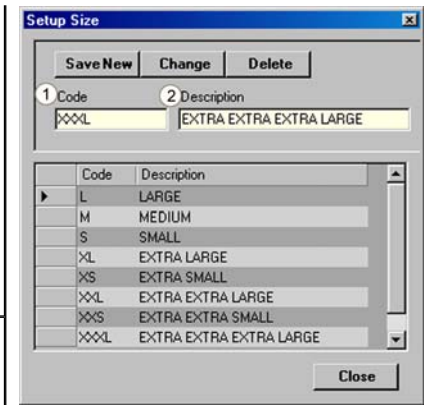
### Change an Existing Size

To change a size description, select the style from the list, make the changes in the Description field (2), and then click Change.

### Delete an Existing Size

To delete a size, select it from the list, then click Delete.

**Warning: A deletion cannot be undone!**



### Color Setup

Open the Color Setup screen by selecting Modules from the main menu, then Apparel Matrix, then Setup, then Color Setup.

### New Color

In the Code field (1), enter a code to represent the color. Briefly describe the color in the Description field (2). Click Save New when completed.

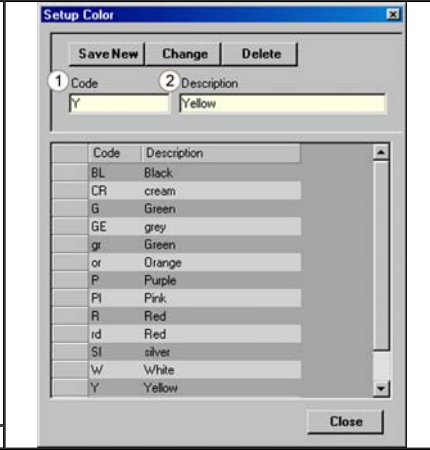
### Change an Existing Color

To change a color description, select the style from the list, make the changes in the Description field (2), and then click Change.

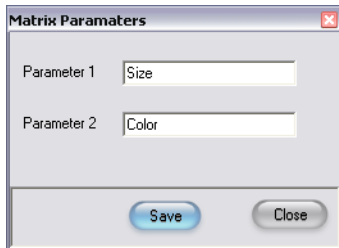
### Delete an Existing Color

To delete a color, select it from the list, then click Delete.

**Warning: A deletion cannot be undone!**



### Matrix Parameters



The user can change the parameter names within the matrix itself.

### Apparel Stock Report



The user can choose an item and style and view a subsequent report:

Report

XYZ Company Inc.  
78 Massachusetts Avenue, Cambridge MA 02139-4307  
http://www.xyz.com  
Phone: 604-123-6397 Fax: 604-123-6797

### APPAREL STOCK REPORT

Style No.	Color	24	36	48	L	M	S	XL	XS	XXL	XXX	XXXL	Qty
Location													0
Location APP-LOCKER1													11
sty01													
Orange				1									1
Pink					1								1
Green						2							2
Pink							1						1
Green								1					1
Green									1				1
White										2			2
Orange											2		2

Current Page No: 1      Total Page No: 1      Zoom Factor: 88%

## Style Matrix

Open the Style Matrix screen by selecting Modules from the main menu, then Apparel Matrix, then Style Matrix. From the Style dropdown menu (1) select the style code to which colors and sizes are being assigned. To add a new style, or change/delete an existing one, click the magnifying glass to bring up the Setup Style screen. The top row (2) shows the colors currently assigned to the selected style. The left column (3) shows the codes of those colors currently assigned to the selected styles. To add a color-size combination to the style, click the point where the size and color meet. An 'X' will appear. To delete a color-size combination from the style, click the 'X' where the size and color meet. The 'X' will be removed

Style Matrix

1 Style: Sty02

COLOR	L	M	S	XL	XS	XXL	XXX	XXXL
BL	X							
CR								
G				X				X
GE	X				X			
gr								
or								X
P		X			X			
PI	X							
R				X		X		
rd								X
SI	X		X				X	
W								
Y								
yww								

Buttons: Save, Close

## Assign Styles to Items

Select Apparel Matrix from the Modules dropdown menu, then Assign Styles to Items. From the Item dropdown field (1) select the item to which style(s) are to be assigned. In the Unassigned Styles list (2) select the style(s) to be assigned to the item. Click the double right arrow (4) to assign the item, which then moves to the Assigned Styles list (3).

Assign Styles to Items

1 Item: Pajamas

Unassigned Styles	Assigned Styles
del ll 01 sty02 sty03 004 T1C1 T1C2	sty01 sty05

Buttons: >> (4), << (5), Close

## Remove Styles from an Item

To remove a style from an item, select it in the Assigned Styles list (3), and then click the double left arrow (5) to move it to the **Unassigned Styles** list (2).

## Apparel Cost Price

Items may have specific costs/prices on a per-style, per-size and/or per-color basis in the *Apparel Cost Price* screen.

Apparel Cost Price

Item description: Pajamas      Item code: CLD-03-002      All Items

Style: All Styles      Color: All Colors

Size: All Sizes      Cost: 0.00      Null Value:      Price: 25.00      Null Value:      Save      Delete

Item Desc	Item Code	Style	Color	Size	Cost	Price

Buttons: Display, Save, Delete, Close

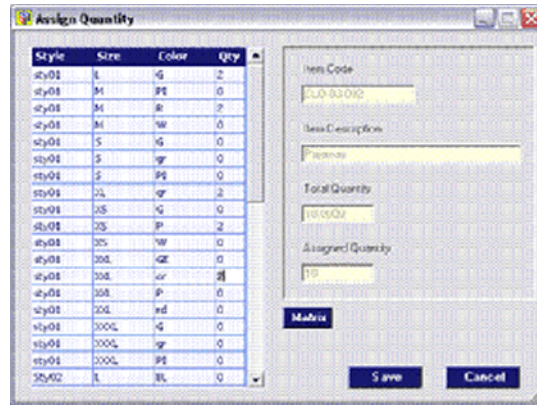
## Receiving Matrixed Items

The style information for apparel matrixed items appears in the manufacturer's lot field on any

transactions featuring the items.

On a Receipt of Goods for a matrixed item, the user will be prompted to confirm usage of the apparel matrix on that transaction. Once an affirmative response has been given, a screen will appear wherein a choice can be made from all possible style/size/colour combinations available in the system for that item.

For instance, if one receives in ten pairs of pajamas –an item which has been assigned to styles STY01 and STY02– the screen will show all possible combinations of sizes and colours in those assigned styles.



The Total Quantity field shows the number of items being received. All that is left for the user to do is enter in the Qty column the number of each style combination being received on the current transaction. Once selections are made, the Assigned Quantity must match the Total Quantity. If all selections are complete, the receipt of goods will continue to the items screen where, as in the above example, the following will appear:



Notice that the style-size-colour information for each appears in the receipt. Once the Save button is clicked, the receipt is complete.

### Issuing Matrixed Items

Matrixed items on transfers and/or invoices would be selected using the same manner that a user would select any items with manufacturers lots assigned to them: items are selected by Item Description, Item Code or UPC and then appropriate quantities are entered, manufacturer lots chosen from, etc. until the transfer/sales document is complete and saved.

### Using SKU Numbers

A new feature has been added for the use of **SKU** (Stock Keeping Unit) numbers with the existing style-size-color information kept in the manufacturer lot fields. Access *Setup>Global Settings>Transactions* tab from the main screen. Select the checkbox next to **Scan UPC as UPC + Manufacturer Lot**. With this feature, codes for apparel items can be part of the UPC code giving you unique SKU capabilities for your apparel items. Thus an item's code can also be entered/viewed as part of the data kept in the *Manufacturer Lot* field.

### Important SIMMS Software Contact Information



201-31234 Wheel Avenue, Abbotsford, BC V2T 6G9	Sales	Phone	604-504-7936
Tel: 604-504-7936		e-mail	sales@kcsi.ca
Website: <a href="http://www.kcsi.ca">www.kcsi.ca</a>	Fax: 604-504-7976	Phone	604-504-7936
	Email: <a href="mailto:sales@kcsi.ca">sales@kcsi.ca</a>	e-mail	support@kcsi.ca
		Fax	604-504-7976
	Accounting	Phone	604-504-7936
		e-mail	colleen@kcsi.ca